

DRAWING / PROJECT APPROVAL

☐ REVISE AS NOTED AND RETURN FOR APPROVAL

☐ APPROVED FOR CONSTRUCTION AS DRAWN

PLEASE INDICATE ABOVE, SIGN AND RETURN

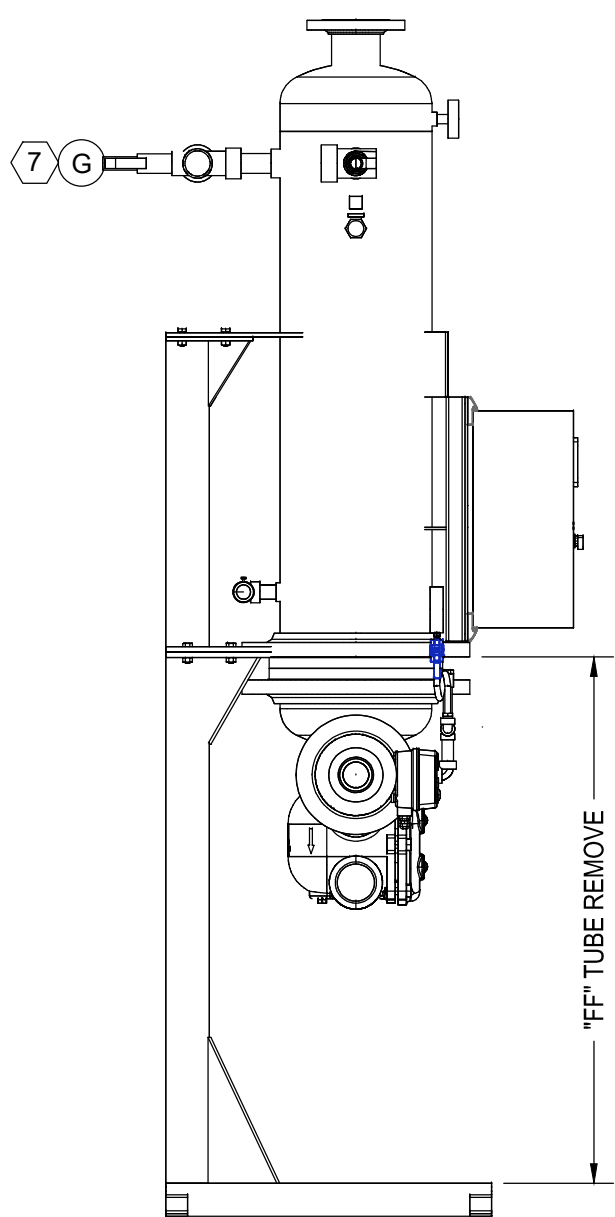
RETURNED BY: _____

DATE: _____

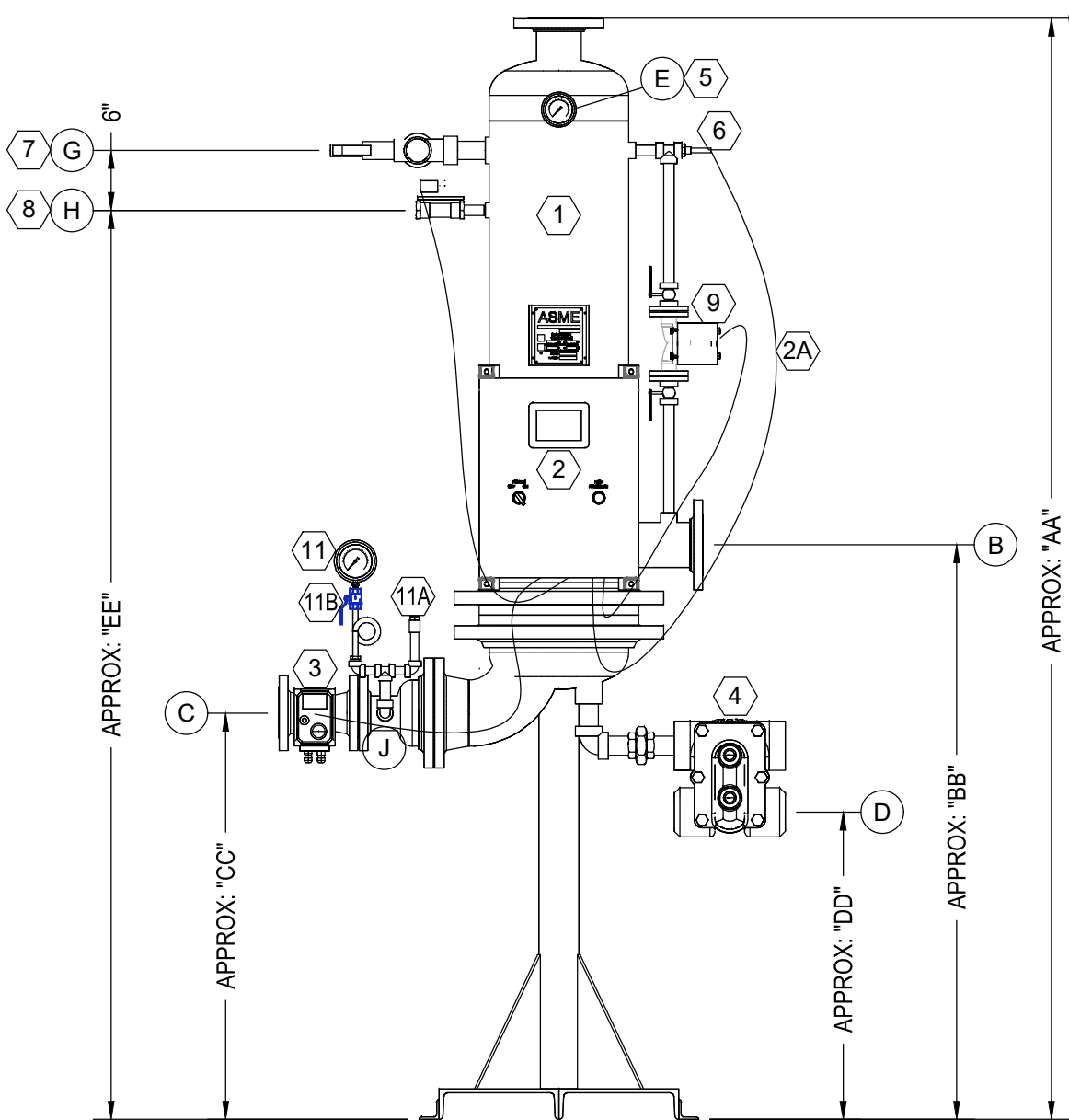
It is the sole responsibility of the purchaser to assure that this drawing fully complies with any / all specifications and conditions of service when approving for construction. Approval for construction is an agreement that this system, as presented in this drawing fully complies.

Material procurement and construction will NOT begin until we receive your final drawing approved for construction without pending changes. Quoted delivery lead times are based from the end of the drawing approval process. If you require procurement to begin prior to drawing approval, make commitments and arrangements with your sales person.

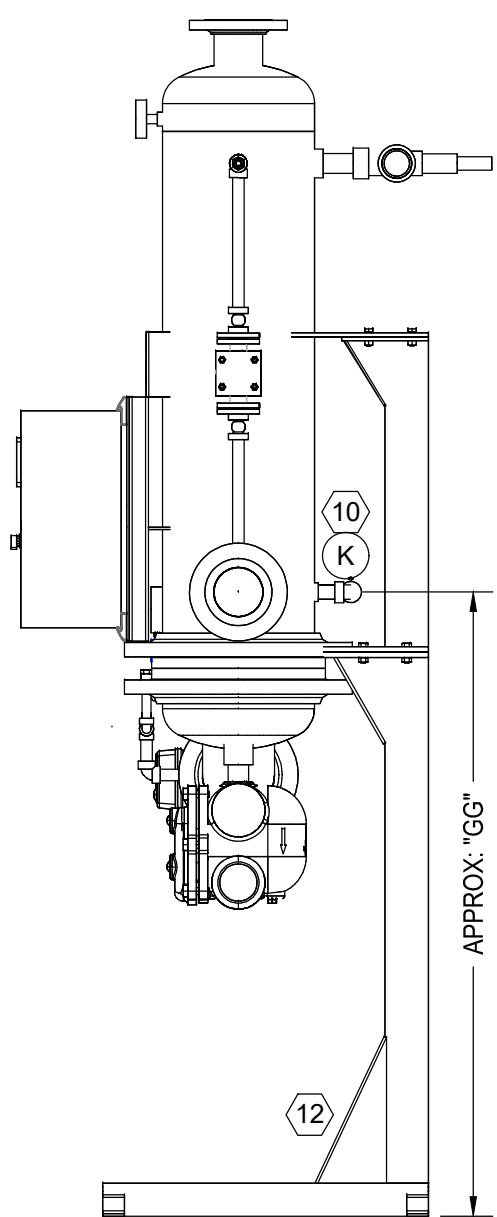
- GENERAL NOTES:
- 100% FACTORY TESTED BEFORE SHIPMENT
 - SINGLE SEATED SEGMENTED V CONTROL VALVE FOR DEAD TIGHT SHUTOFF ON NO LOAD CONDITIONS. 300:1 TURNDOWN
 - 316L STAINLESS STEEL SHELL CONSTRUCTION
 - FULL SELF TUNING PID DIGITAL CONTROLS
 - DOUBLE SAFETY SOLENOID SAFETY HIGH LIMIT SYSTEM FAIL SAFE TEMPERATURE CONTROLLER AND CONTROL VALVE
 - MOUNTING FRAME INCLUDED
- INSTALLATION NOTES:
- BLEND VALVE RECOMMENDED WITH 140F OR HIGHER SET POINT.
 - ALL DIMENSIONS TO HAVE $\pm\frac{3}{2}$ " TOLERANCE
 - WHEN USING A FLOAT & THERMOSTATIC STEAM TRAP, THE CONDENSATE MUST DRAIN BY GRAVITY TO A VENTED RECEIVER, NO CONDENSATE LIFT OR BACK PRESSURE ALLOWED FROM TRAP OUTLET.
 - PROPERLY SIZED STRAINER WITH 100 MESH SCREEN MUST BE INSTALLED WITHIN 3FT OF THE CONTROL VALVE.
 - PIPE NOZZLES "G", "H", AND "K" TO A SUITABLE DRAIN BY OTHERS.
 - NOZZLES WILL NOT SUPPORT EXTERNAL LOADINGS. FIELD SUPPORT BY OTHERS.
 - CONTROL VALVE, STEAM TRAP AND GAUGES, SHIPPED LOOSE FIELD INSTALLED BY OTHERS.
 - STEAM SUPPLY TO THE CONTROL VALVE SHOULD BE SIZED FOR NO MORE THAN 10,000 FPM TO AVOID HIGH PRESSURE DROPS.
 - MAIN DRIP STEAM TRAP MUST BE LOCATED DIRECTLY AT THE CONTROL VALVE INLET.
 - CONTROL VALVE MUST BE INSTALLED, AS SHOWN, ON IT'S SIDE. VALVE CONTROL ELECTRONICS ARE NOT INSULATED.



LEFT SIDE VIEW



FRONT VIEW

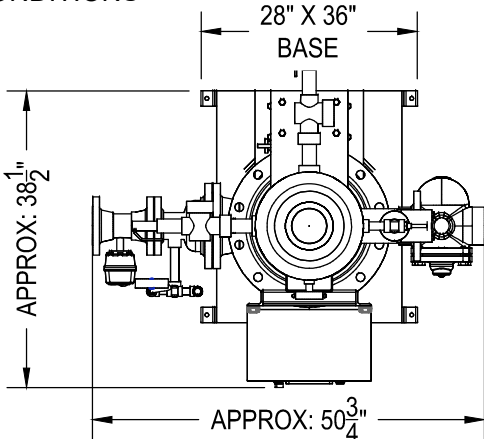


RIGHT SIDE VIEW

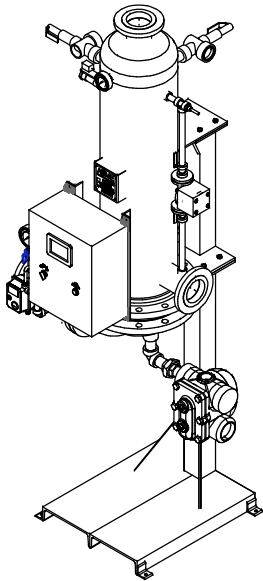
DIM TOL= +/- 1/2"

MODEL	STANDARD DIMENSIONS								STANDARD WEIGHTS (LBS)			
SELECTION	MODEL	"AA"	"BB"	"CC"	"DD"	"EE"	"FF"	"GG"	SHIPPING	DRY	FLOODED	SHIPPING
	1448 SINGLE WALL	110.25	57.54	41.69	31.75	91.03	48.00	57.54	4'X10'X4'	786	953	1011
	1448 DOUBLE WALL	110.25	57.54	40.69	30.75	91.03	48.00	57.54	4'X10'X4'	851	1018	1076

DO NOT SUBJECT EQUIPMENT TO FREEZING TEMPERATURES OR OUTDOOR CONDITIONS



PLAN VIEW



ISOMETRIC VIEW

DESIGN DATA	
ASME CODE SECTION VIII, DIV. 1 STAMP UM	
SHELL RATED	150 PSI @ 375F
TUBE RATED	150 PSI @ 375F
CONDITION OF SERVICE AND PERFORMANCE DATA	
FLOW RATE (gpm)	GPM
INLET TEMPERATURE (Deg. F)	°F
OUTLET TEMPERATURE (Deg. F)	°F
INLET STEAM PRESSURE (PSI)	PSIG
STEAM CAPACITY REQ. (LBS/HR)	LBS/HR
SEE QUOTE	
MATERIALS of CONSTRUCTION	
SHELL	316L STAINLESS STEEL
TUBES	
TUBESHEET (OUTER)(DOUBLE WALL ONLY)	
TUBESHEET (INNER)	
STEAM HEAD	CAST IRON

BILL of MATERIALS		
ITEM	SIZE SELECTION	DESCRIPTION
1	BUNDLE	14"Ø X 48" SHELL (ASME CODE STAMPED), 1 1/2" OF GLASS INSULATION & VINYL JACKET
2		THERMAFLO ELECTRONIC CONTROLLER, UL LISTED, PID ELEC. TEMP. CONTROL, W/ SAFETY SHUTDOWN AND OPERATION INDICATOR LIGHTS
2A	STANDARD	1/2" UL LIQUIDTIGHT FLEXIBLE STEEL CONDUIT, TYPE LFMC
3		THERMAFLO JVV-VBALL STEAM CONTROL VALVE, STAINLESS, W/FAIL SAFE ACTUATOR
4		THERMAFLO FLOAT AND THERMOSTATIC STEAM TRAP
5	STANDARD	TEMPERATURE GAUGE, 0-250F, SS WELL
6	STANDARD	1/2" RTD, 4-20ma OUTPUT FROM CONTROLLER
7	STANDARD	1-1/2" 18C5424150 PRESSURE & TEMP. RELIEF VALVE, SAT @ 150 PSI @ 210F, RATED @ 6,050,000 BTU.
8	STANDARD	3/4" HIGH-TEMP. DUMP SOLENOID
9	STANDARD	3/4" SHELL RE-CIRCULATION PUMP
10	STANDARD	1" THERMAFLO 3700 BALL VALVE, FULL PORT, STAINLESS STEEL
11	STANDARD	4.5" DIAL PRESSURE GAUGE 0-30 PSIG W/ SYPHON
11A	STANDARD	3/4" THERMAFLO VACUUM BREAKER
11B	STANDARD	1/4" THERMAFLO 3700 BALL VALVE, FULL PORT, STAINLESS STEEL
12	STANDARD	THERMAFLO CARBON STEEL STAND

NOZZLES & CONNECTIONS			
ITEM	SIZE (IN)	TYPE	SERVICE
A	4	150# FLG	HOT WATER OUTLET
B	4	150# FLG	COLD WATER INLET
C		NPT	STEAM INLET
D		NPT	CONDENSATE OUTLET
E	3/4	NPT	GAUGE
G	1 1/2	NPT	RELIEF VALVE
H	3/4	NPT	DUMP SOLENOID
J	3/4	NPT	GAUGE
K	1	NPT	DRAIN

TAG:

#	DATE	REVISION	BY
---	------	----------	----

Since 1986

THERMAFLO INC.

Manufacturers Of Steam Fired Specialty Equipment

2880 Fair Avenue, Newberry, SC 29108

(704) 940-1228 www.thermafloengineering.com

DESCRIPTION:
TH750V-14"-EC1000 STEAM FIRED WATER HEATER

CUSTOMER:

JOB #

QTY.

DATE:

SCALE:

DRAWN:

PO #

PLAN #

FILE:

SAME

REV.#

PAGE:
1 OF 1