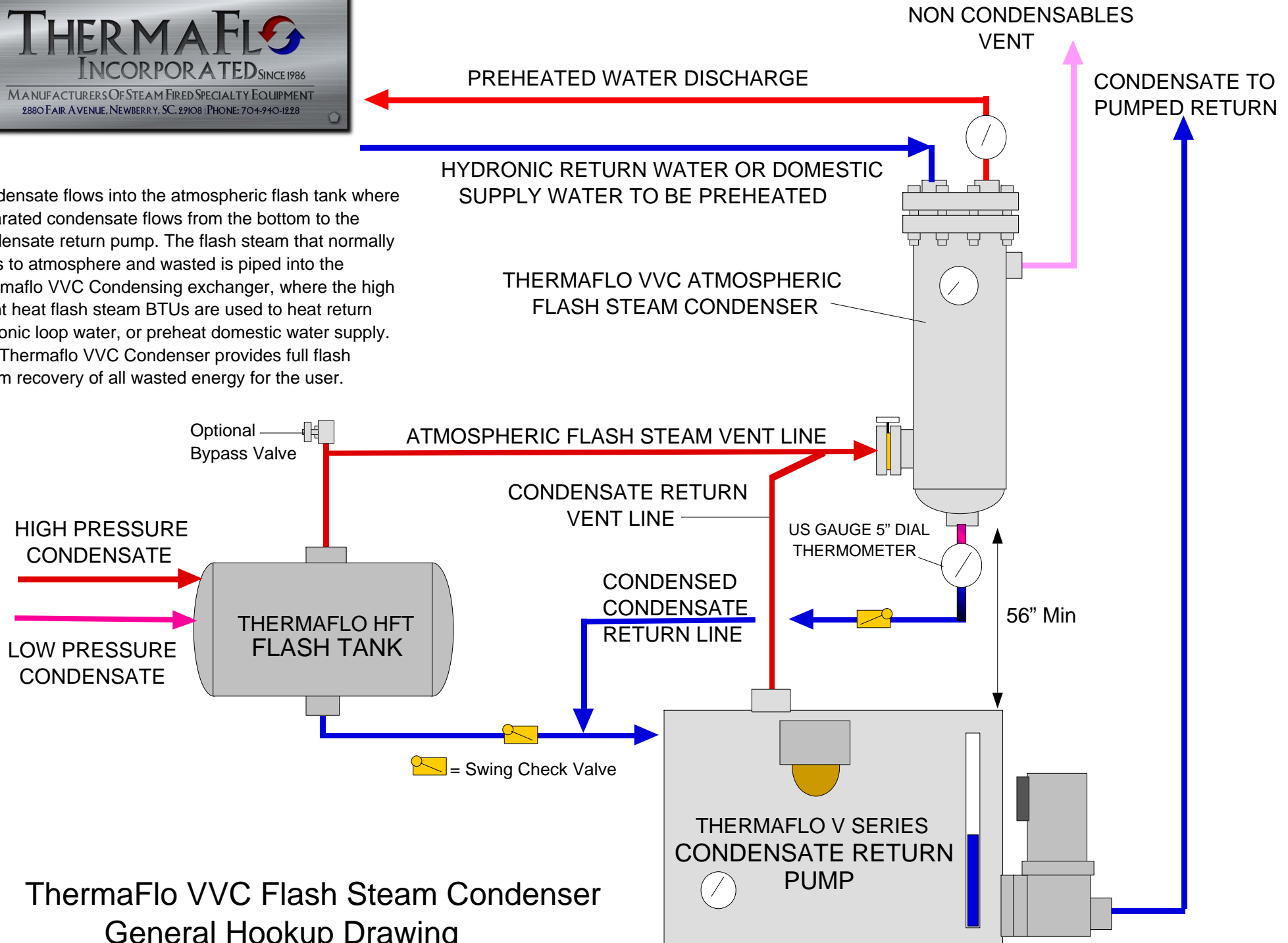




Condensate flows into the atmospheric flash tank where separated condensate flows from the bottom to the condensate return pump. The flash steam that normally flows to atmosphere and wasted is piped into the Thermaflo VVC Condensing exchanger, where the high latent heat flash steam BTUs are used to heat return hydronic loop water, or preheat domestic water supply. The Thermaflo VVC Condenser provides full flash steam recovery of all wasted energy for the user.



ThermaFlo VVC Flash Steam Condenser
General Hookup Drawing