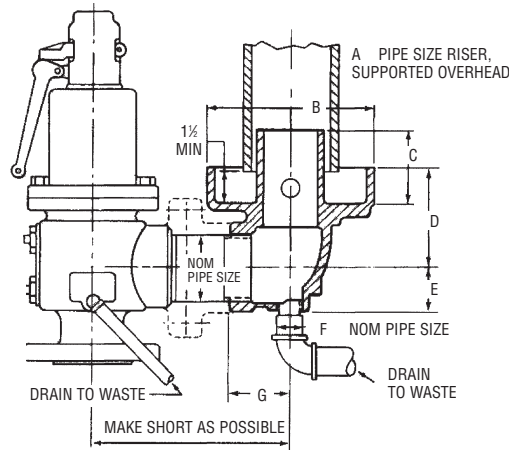




DRIP PAN ELBOWS



Cast Iron Drip Pan Elbows for steam service. Installation for power boilers and unfired pressure vessel service.

DIMENSIONS

Size	A	B	C	D	E	F	G	Wt. Lbs.
¾-1"	1½	3¾	1¾	2¾	1½	¾	1½	2
1¼-1½"	2½	5½	2½	4¾	1¾	¾	2½	5
2"	3	6¾	2¾	3¾	1¾	¾	2¾	7
2½"	3¾	7¾	3	4¾	1¾	¾	2¾	11
3"	4	8	3¾	4¾	2¾	¾	3¾	19
4"	6	9¾	4¾	5¾	2¾	¾	3¾	27
6"	8	12¾	6¾	7¾	4¾	¾	8	80
8"	10	16¾	7¾	9¾	5¾	1	10¾	150
10"	FABRICATED STEEL—CONSULT FACTORY							

6" and 8" elbows have integral 125 lb. ANSI flange.
 Cast Iron Construction rated at 406F Max Temp
 and 125 psig vented discharge pressure