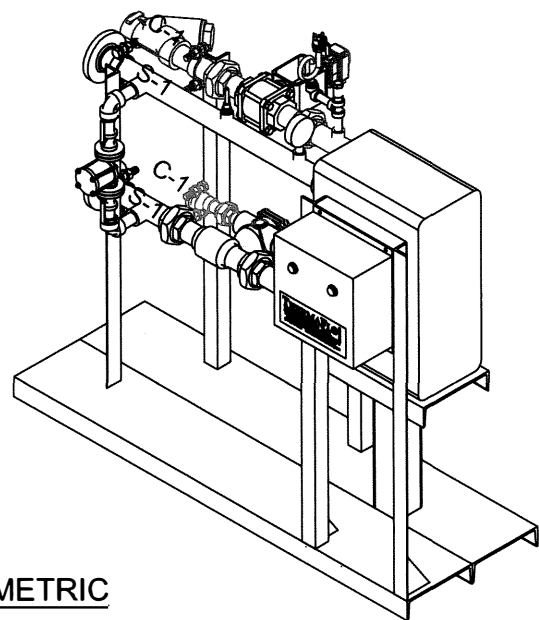
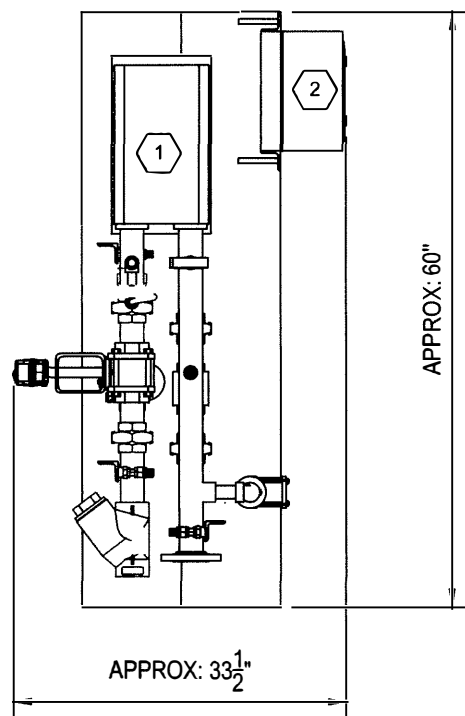


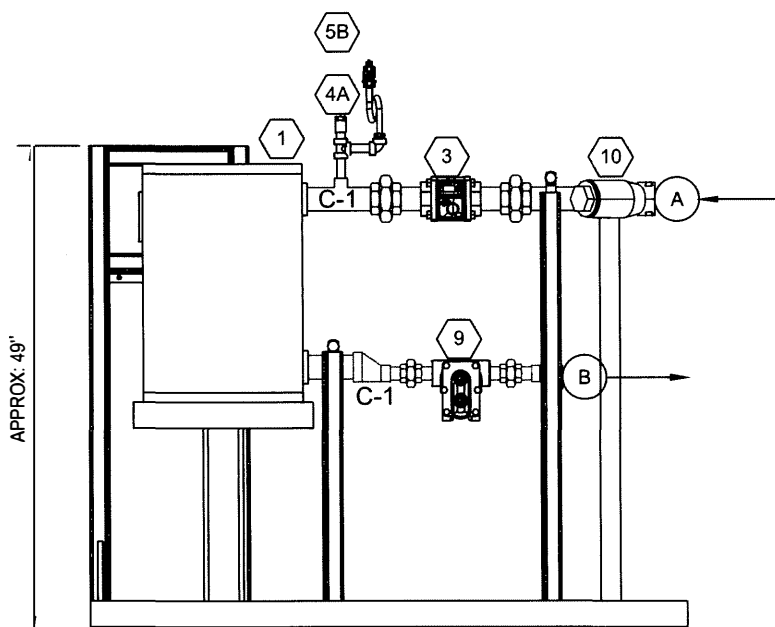
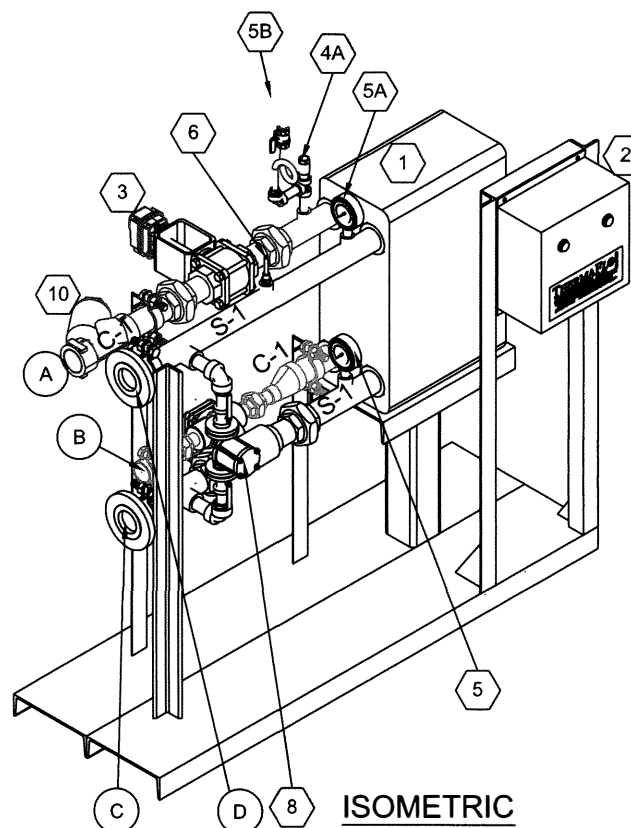
- Heating Flows to 1200 GPM
- 300:1 Segmented V Electronic Control Valve
- BacNet Digital UL Listed Controller
- Zero Flash Subcooling Design



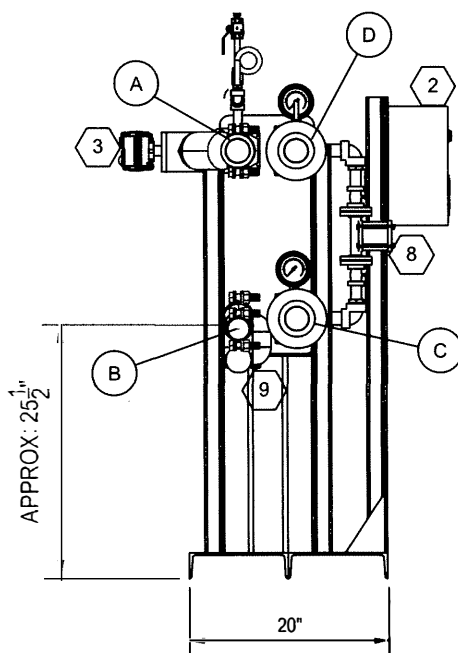
ISOMETRIC



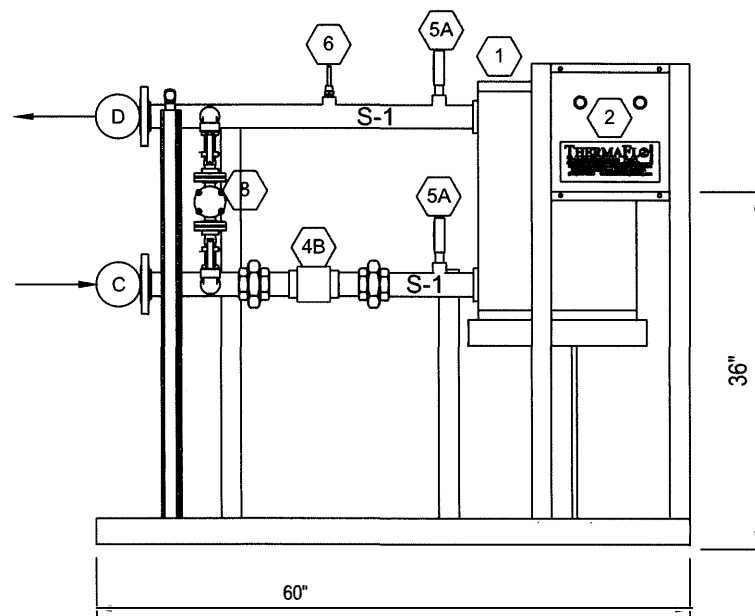
PLAN VIEW



BOILER SIDE VIEW



FRONT VIEW



DOMESTIC SIDE VIEW

DESIGN DATA			
ASME CODE SECTION VIII, DIV. 1 STAMP			
SYSTEM RATED	150 PSIG @ 300°F		
CONDITIONS OF SERVICE AND PERFORMANCE DATA			
DESCRIPTION	HOT WATER		
FLOW RATE	GPM		
INLET TEMPERATURE	°F		
OUTLET TEMPERATURE	°F		
STEAM PRESSURE TO CONTROL VALVE	PSIG		
LBS/HR STEAM REQUIRED AT MAX FLOW	LBS/HR		
MATERIALS OF CONSTRUCTION			
PLATES	BRAZED PLATE, DOUBLE WALL		
STAND	CARBON STEEL		
PIPING - DOMESTIC WATER	316 STAINLESS STEEL		
PIPING - STEAM/CONDENSATE	CARBON STEEL		
BILL OF MATERIALS			
ITEM	QTY	DESCRIPTION	
1	1	THERMAFLO ENGINEERING INC. MDL. TH750-BP-DWEN-SW BRAZED PLATE PAK STEAM TO WATER HEATER, ASME CODE STAMPED	
2	1	EC800-2 ELECTRONIC TEMPERATURE CONTROL PANEL IN NEMA 4 ENCLOSURE. UL DIGITAL MICROPROCESSOR MODBUS PID TEMPERATURE CONTROLLER WITH DIGITAL DISPLAY, OVERTEMP SHUTDOWN 110V SINGLE POINT POWER CONNECTION	
3	1	2" NPT JVV TYPE V-PORT CONTROL VALVE, WITH ELECTRONIC ACTUATOR, FAILED CLOSED, CLASS VI SHUT OFF 100:1 FLOW TURNDOWN, MANUAL OVERRIDE FITTED WITH BYPASS	
4A	1	3/4" THERMAFLO VACUUM BREAKER	
4B	1	2" THERMAFLO 6800 IN-LINE CHECK VALVE, SS	
5A	2	3" BIMETAL TEMP GAUGE, 0-250°F, 1/2" ADJUSTABLE CONN, SS WELL	
5B	1	4.5" DIAL PRESSURE GAUGE 0-30 PSIG W/ SYPHON	
6	1	1/2" RTD TEMPERATURE SENSOR FOR HOT WATER OUTLET.	
7	1	PRESSURE AND TEMPERATURE RELIEF VALVE SET AT 150 PSIG @ 250F (SHIPS LOOSE)	
8	1	3/4" STAINLESS STEEL RECIRCULATION PUMP WITH PANEL MOUNTED ON/OFF SWITCH.	
9	1	1" THERMAFLO FT-42 FLOAT AND THERMOSTATIC STEAM TRAP	
10	1	2" 250# TITAN YS12-CI WYE STRAINER, CI	
NOZZLES & CONNECTIONS			
ITEM	SIZE (IN.)	TYPE / RATING	SERVICE
A	2"	NPT	STEAM INLET
B	1-1/2"	NPT	CONDENSATE OUTLET
C	2"	150# FLG	DOMESTIC WATER INLET
D	2"	150# FLG	DOMESTIC WATER OUTLET

**DRAWING / PROJECT APPROVAL**

ISSUED FOR APPROVAL DATE \_\_\_\_\_ BY: \_\_\_\_\_

REVISE AS NOTED AND RETURN FOR APPROVAL

APPROVED FOR CONSTRUCTION AS DRAWN

PLEASE INDICATE ABOVE, SIGN AND RETURN

RETURNED BY: \_\_\_\_\_

DATE: \_\_\_\_\_

It is the sole responsibility of the purchaser to assure that this drawing fully complies with any / all specifications and conditions of service when approving for construction. Approval for construction is an agreement that this system, as presented in this drawing fully complies. Material procurement and construction will NOT begin until we receive your final drawing approved for construction without pending changes. Quoted delivery lead times are based from the end of the drawing approval process. If you require procurement to begin prior to drawing approval, make commitments and arrangements with your sales person.

S-1 = 316 STAINLESS STEEL  
C-1 = CARBON STEEL

TAG:  
EST. WEIGHT: 875

#	DATE	REVISION	BY

DWG. STATUS: TFEI DESIGN DEVELOPMENT  ISSUED, FOR APPROVAL  ISSUED, FOR CONSTRUCTION

Since 1986  
**THERMAFLO** INC.  
Manufacturers Of Steam Fired Specialty Equipment  
2880 Fair Avenue, Newberry, SC 29108  
(704) 940-1228 www.thermafloengineering.com

DESCRIPTION: TH750-BP-DWEN (SW=STEAM TO WATER PLATE PAK)						
CUSTOMER:	JOB #	QTY.	DATE:			
			02-16-23			
SCALE:	DRAWN:	PO #	PLAN #	FILE:	REV. #	PAGE:
	RSP		-	SAME	0	1 OF 1