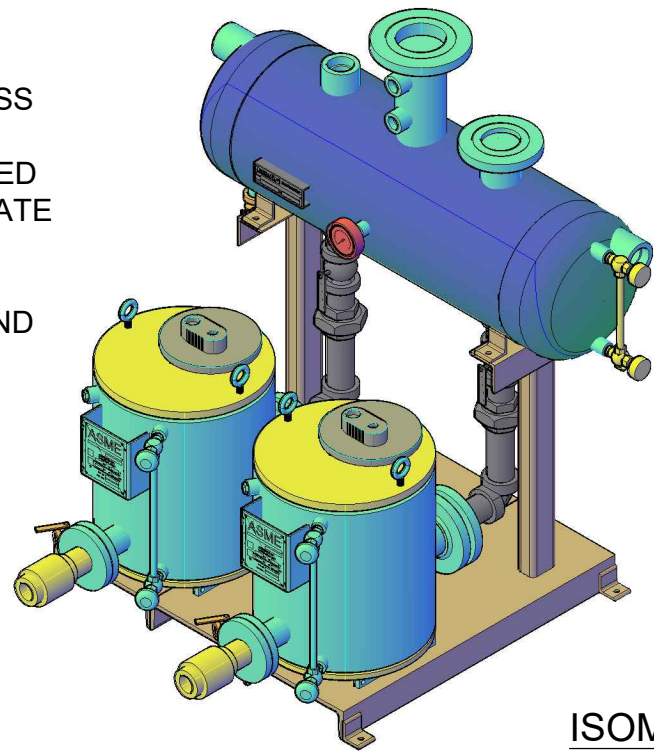


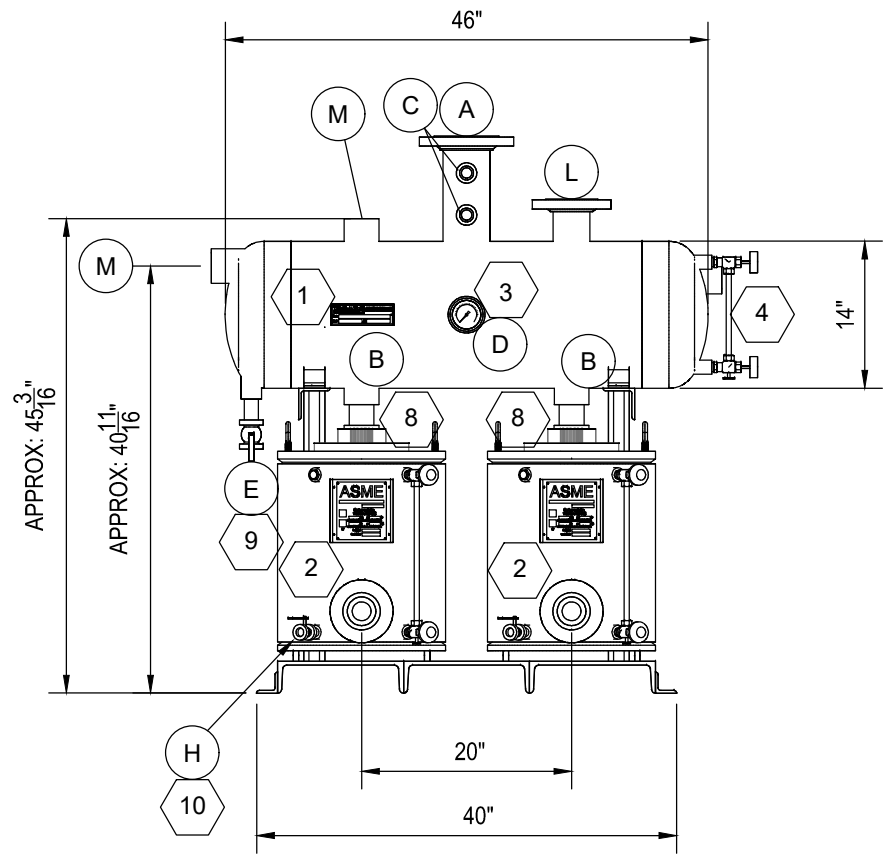
PLAN VIEW

FEATURES AND BENEFITS:  
 > SINGLE SPRING COMPRESSION MECHANISM  
 FIVE MILLION CYCLES STANDARD  
 > INCONEL X SPRING AND STAINLESS STEEL INTERNALS  
 > ASME CODE SECTION VIII CERTIFIED  
 > COMPLETE PACKAGED CONDENSATE SYSTEM  
 > NO SEALS OR CONTROL PANELS  
 > PUMPS CONDENSATE AT 212°F AND ABOVE STANDARD

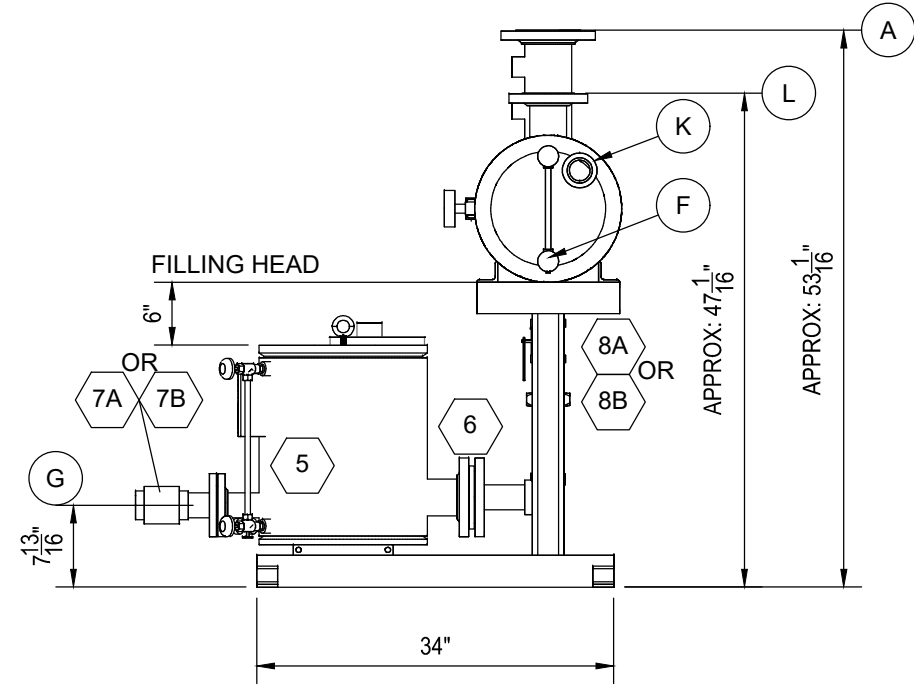
1/2" MOTIVE CONNECTION,  
 1" MOTIVE SUPPLY



ISOMETRIC



FRONT VIEW



RIGHT SIDE VIEW

NOTE: 150# ASME CONDENSATE RECEIVER AVAILABLE

NOTE: MAX FLASH STEAM TO ATMOSPHERE FOR 4" VENT 600LBS/HR  
 IF FLASH STEAM EXCEEDS 800LBS/HR CONTACT FACTORY TO AVOID ADVERSE PUMP OPERATION

SHIPPING WEIGHT: 850 LBS DIM TOL= +/- 1/2"

DESIGN DATA			
CONDENSATE TANK	ATMOSPHERIC - NOT RATED		
CONDITION OF SERVICE AND PERFORMANCE DATA			
STEAM MOTIVE PRESSURE	SEE		
CONDENSATE BACKPRESSURE	CHART		
PUMP CAPACITY EACH	BELOW		
MATERIALS of CONSTRUCTION			
TANK SHELL	ASME HEAVY SHELL CARBON STEEL		
STAND	CARBON STEEL		
PIPING	CARBON STEEL		
PUMP	304 STAINLESS STEEL SHELL/SA-516 GR70 HEADS		
BILL of MATERIALS			
ITEM	QTY	DESCRIPTION	
1	1	THERMAFLO CONDENSATE ASME TANK, 14X46 OAL, 30 GALLON, HEAVY SHELL	
2	2	THERMAFLO ENGINEERING MODEL POP-LP ASME CODE PRESSURE OPERATED CONDENSATE PUMP, STAINLESS STEEL INTERNAL MECHANISM	
3	1	3" BIMETAL THERMOMETER W/SS WELL, 0-250F	
4	1	10" CONBRACO MODEL 24-350 SIGHT LEVEL GAUGE	
5	2	14.5" CONBRACO MODEL 24-350 SIGHT LEVEL GAUGE	
6	2	3" MODEL CV 125S, INLET CHECK VALVE, STAINLESS STEEL BODY AND TRIM	
7A	2	1-1/2" MODEL 6800, OUTLET CHECK VALVE, STAINLESS STEEL BODY AND TRIM	
7B	2	2" MODEL 6800, OUTLET CHECK VALVE, STAINLESS STEEL BODY AND TRIM	
8A	2	1-1/2" 3700 DRAIN BALL VALVE, FULL PORT	
8B	2	2" 3700 DRAIN BALL VALVE, FULL PORT	
9	1	1" 3700 DRAIN BALL VALVE, FULL PORT	
10	2	1/2" 3700 DRAIN BALL VALVE, FULL PORT	
NOZZLES and CONNECTIONS			
ITEM	SIZE (IN)	TYPE & RATING	SERVICE
A	4	150# FLG	VENT
B	1-1/2 OR 2	150# FLG	PUMP FEED
C	1	NPT	PUMP EXHAUST
D	3/4	NPT	TEMPERATURE GAUGE
E	1	NPT	DRAIN
F	1/2	NPT	SIGHT LEVEL
G	1-1/2 OR 2	NPT	PUMP OUTLET
H	1/2	NPT	SIGHT LEVEL / DRAIN
J	1	NPT	PUMP MOTIVE
K	2	NPT	OVERFLOW
L	2	150# FLG	CONDENSATE INLET
M	2	NPT	CONDENSATE INLET

CAPACITIES STEAM MOTIVE CONDENSATE LBS/HR  
 LOW PROFILE-DUPLEX-POP-LP

STEAM MOTIVE PRESSURE PSIG	TOTAL BACK PRESSURE PSIG	1.5" x 1.5" 6" FILL HEAD	2" x 2" 6" FILL HEAD
10	5	3,346	5,559
10	2	4,651	9,677
25	15	5,205	7,684
25	10	5,969	9,955
25	5	7,072	11,846
50	40	34,952	5,236
50	25	6,252	10,404
50	10	7,839	11,373
75	40	5,996	9,058
75	15	8,527	12,988
100	60	5,984	8,554
100	40	7,754	10,554
100	25	8,995	12,521
125	115	3,699	5,855
125	80	6,134	8,473
125	60	7,240	10,309
125	40	8,886	11,859
125	25	9,963	12,665
150	100	5,350	6,256
150	80	6,327	7,738
150	60	8,602	9,479
150	40	8,781	11,125
150	25	12,062	12,871

**THERMAFLO** INC. Since 1986  
 Manufacturers Of Steam Fired Specialty Equipment  
 2880 Fair Avenue, Newberry, SC 29108  
 (704) 940-1228 www.thermafloengineering.com

DESCRIPTION: LOW PROFILE POP-LP-D-3012-PP-DUPLEX PRESSURE OPERATED PUMP SYSTEM	JOB #	QTY.	DATE: 07-20-20
CUSTOMER:	FILE: POP-LP-D-3012-DUPLEX	REV.# 0	PAGE: 1 OF 1
SCALE:	DRAWN: RSP	PO #	PLAN #

THIS DRAWING AND INFORMATION THEREON ARE THE PROPERTY OF: THERMAFLO INCORPORATED AND SHALL NOT BE USED OR DISCLOSED, EXCEPT IN ACCORDANCE WITH PRIOR WRITTEN APPROVAL. THIS DRAWING AND BILL OF MATERIALS REPRESENTS THE ENTIRE CONTENT OF THERMAFLO'S SCOPE OF SUPPLY. THERMAFLO MAKES NO OTHER REPRESENTATION OF ADDITIONAL ITEMS, VALVES, OR EQUIPMENT OTHER THAN WHAT IS LISTED AND SHOWN HERE. THERMAFLO INCORPORATED RESERVES THE RIGHT TO MAKE DESIGN CHANGES AS NEEDED.