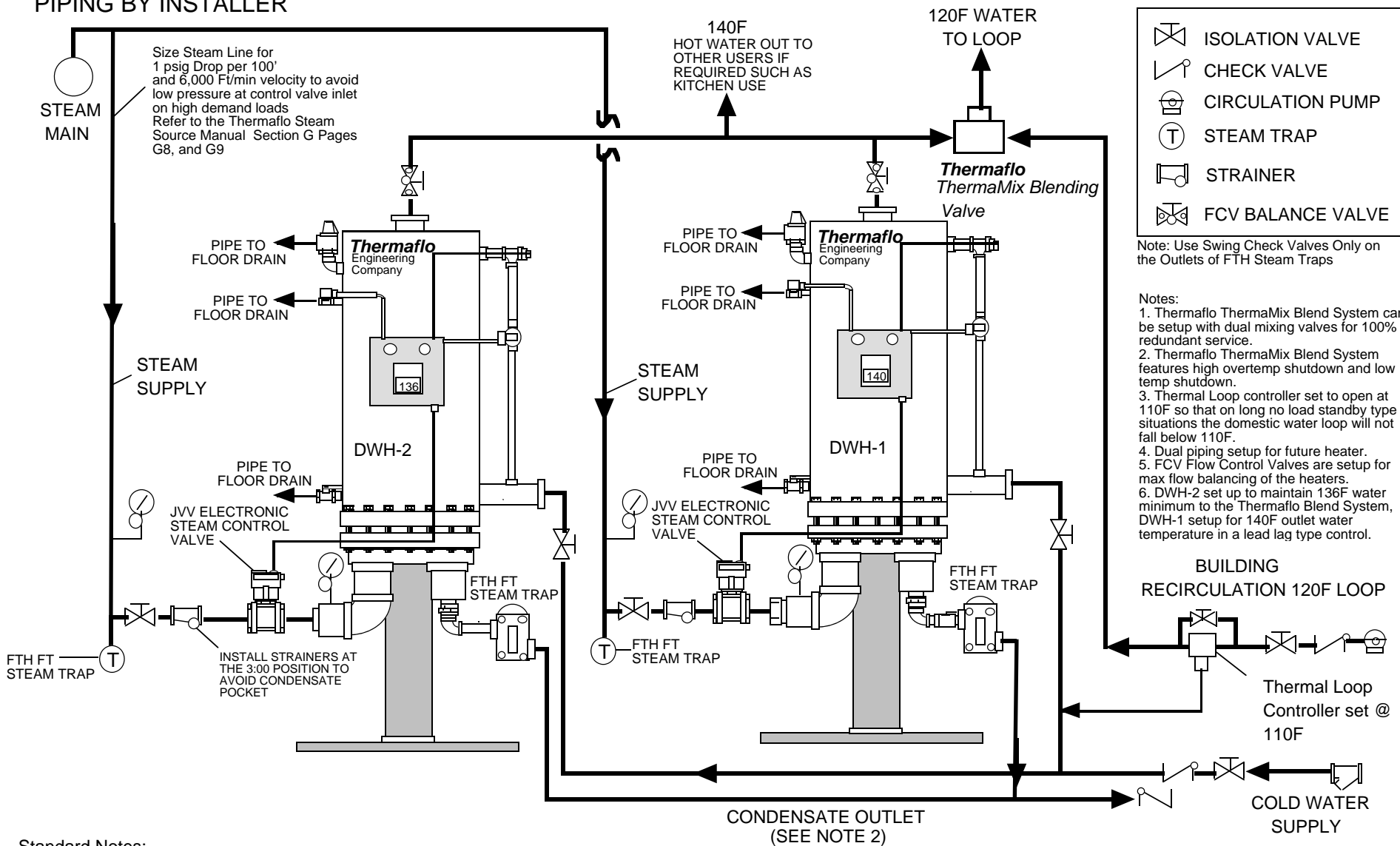


PIPING BY INSTALLER



Standard Notes:

1. SUGGESTED PIPING DESIGN. DESIGNER SHOULD CONSULT LOCAL CODES TO VERIFY LOCAL CODE COMPLIANCE. THIS IS A TYPICAL INSTALLATION SHOWN.
2. ALWAYS PIPE OUTLET CONDENSATE TO GRAVITY ATMOSPHERIC RETURN LINES, TO AVOID WATER HAMMER AND INTERNAL STEAM SPACE FLOODING. IF CONDENSATE CAN NOT BE DRAINED BY GRAVITY INSTALL A POP-FT CONDENSATE PUMP TRAP. IF CONDENSATE IS LIFTED WATER HAMMER WILL OCCUR. CONSULT THERMAFLO ENGINEERING.
3. ALWAYS PIPE SUPPLY STEAM FROM THE TOP OF THE HEADER AS SHOWN, AND INSTALL A MAIN DRIP FTH FLOAT AND THERMOSTATIC STEAM TRAP BEFORE THE CONTROL VALVE INLET.
4. REFER TO THE THERMAFLO TH750 IOM FOR STARTUP

TH-750V Steam Fired Dual Unit Piping Hookup with Thermaflo ThermaMix Master Blend System



ITD-TH750D2018