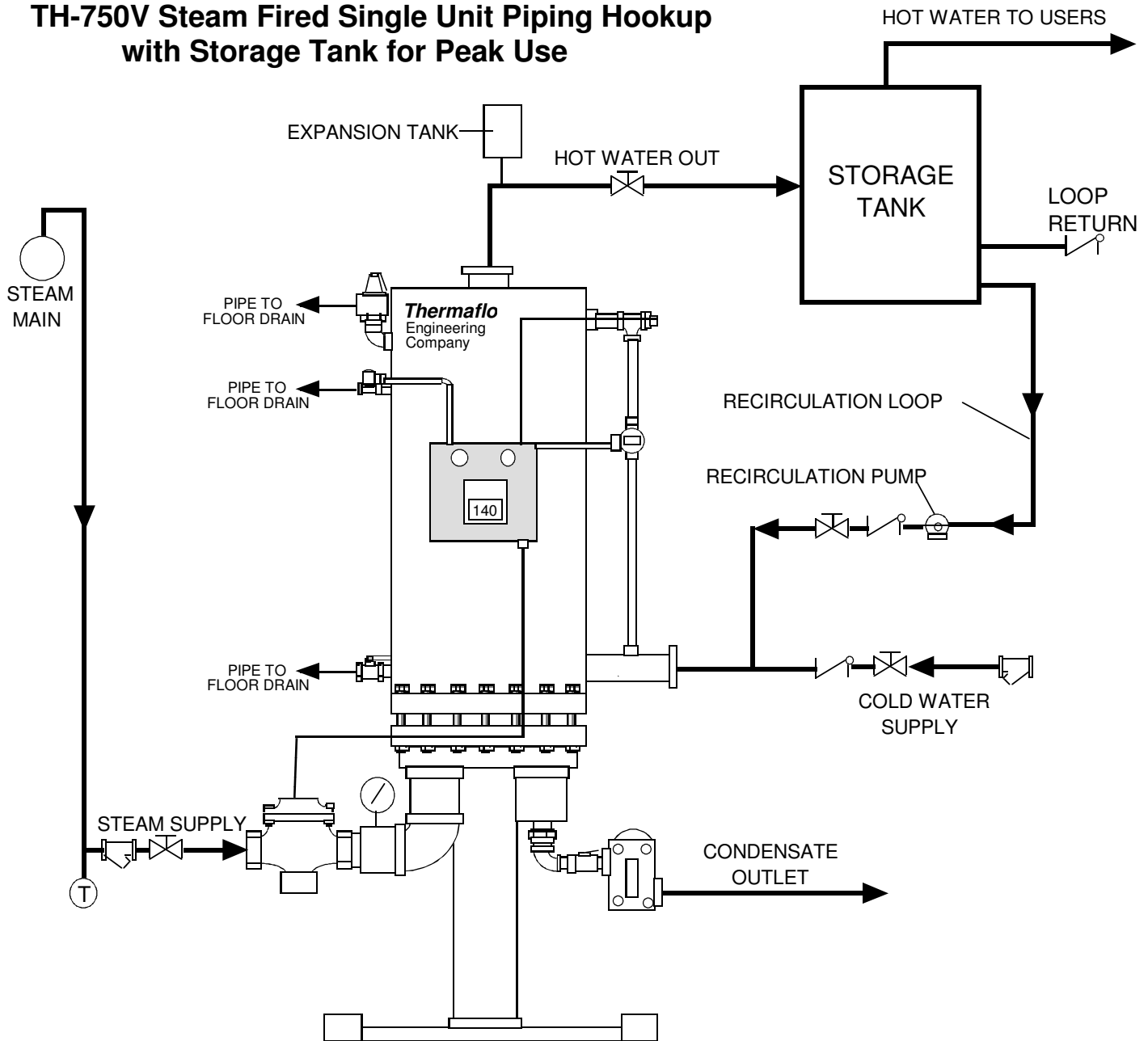


## TH-750V Steam Fired Single Unit Piping Hookup with Storage Tank for Peak Use



### Notes:

1. SUGGESTED PIPING DESIGN. DESIGNER SHOULD CONSULT LOCAL CODES TO VERIFY COMPLIANCE.
2. ALWAYS PIPE OUTLET CONDENSATE TO GRAVITY ATMOSPHERIC RETURN LINES, TO AVOID WATERHAMMER AND INTERNAL STEAM SPACE FLOODING.
3. ALWAYS PIPE SUPPLY STEAM FROM THE TOP OF THE HEADER AS SHOWN, AND INSTALL A MAIN DRIP BEFORE CONTROL VALVE INLET.
4. WHEN HOT WATER IS USED FOR DOMESTIC PURPOSES A MASTER BLEND VALVE IS HIGHLY RECOMMENDED TO PREVENT ANY CHANCE OF SCALDING.