

THE WORLD'S LEADING MANUFACTURER OF  
HIGH TEMPERATURE THERMAL SOLAR PANELS

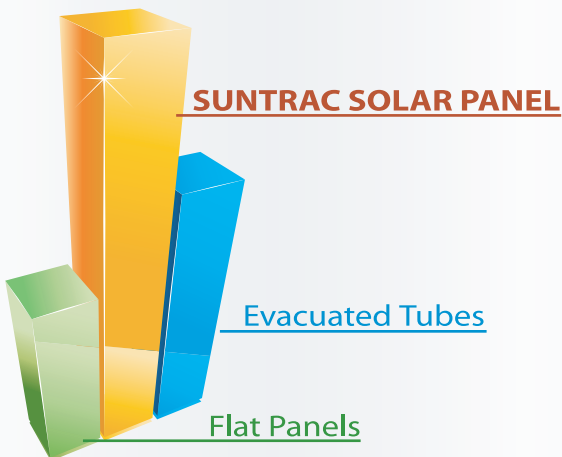
**THERMAFLO**   
ENGINEERING COMPANY Since 1986  
Manufacturers Of Steam Fired Specialty Equipment



SUNTRAC 27TC  
Collector System  
Patented

**Out performs all other products  
in high temperature applications  
by up to 50%**

BTU OUTPUT COMPARISON CHART



The SUNTRAC SOLAR panel is the only  
high temperature commercial solar thermal  
panel made in the U.S.A. that  
**DELIVERS HOT WATER UP TO 250° F**

*SUNTRAC SOLAR is the most cost-effective  
and high performance product on the market  
for commercial and residential solar thermal use.*

#### APPLICATIONS

- FOOD/BEVERAGE PROCESSING
- LAUNDRY
- SANITIZING
- SPACE HEATING - A/C
- MANUFACTURING

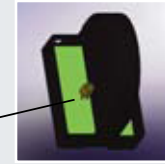
#### SUNTRAC PANELS HIGH QUALITY PERFORMANCE BENEFITS:

- Worry-free operations
- 10 year panel warranty
- Affordable and cost effective
- Superior return on investment
- Reduces energy/fuel bill
- Sustainable & recyclable
- Provides higher utilization of installation area than all other tracking concentrators
- Each panel offsets 1.7 tons of CO<sub>2</sub>e annually
- Generates green leads

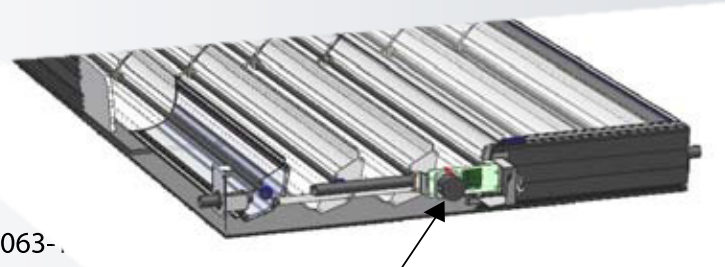
**Start saving today with  
SUNTRAC SOLAR PANELS.**

CALL  
**704.940.1228**

or VISIT [www.thermafloengineering.com](http://www.thermafloengineering.com)  
MADE IN U.S.A.



SUNTRAC  
Photo Sensor  
(tracks the sun)



SUNTRAC  
Computer & Stepper  
Motor Drive  
(changes collector  
angles as it tracks the sun)

## CONSTRUCTION & SPECIFICATIONS

### Collector Case/Frame

- Extruded aluminum with powder coat paint, 6063-
- Back plate, textured aluminum 0.050 inch (0.127 cm) thick overall

### Cover

Tempered low iron plate glass, 3/16" thick (0.1875", 0.476 cm)

### Cover Sealing

EPDM extruded U gasket, vulcanized corners

### Insulation

0.5" (1.27 cm) thick insulation

### Flow Rate

1 GPM per collector - 3.8 LPM per collector

### Net Aperture Area

Reflector area = 27 sq. ft. (2.5 m<sup>2</sup>)

### Weight

170 pounds (27kg)

### Dimensions

96" x 48" x 7" (2.44m x 1.22m x 17.5cm)

### Concentrators

- Extruded aluminum parabolic reflector
- Metalized aluminum foil mirror (for reflector surface)
- Teflon bearings for high temperatures and low friction

### Absorber

- Copper tubing, 1/2" (1.27cm) parallel risers  
1" (2.54cm) L headers; pressure tested to 150PSI
- Black selective paint; absorptivity .92/.96, emissivity .2/.4

### Sun Trackers

Two shaded phototransistors and brushless stepping motor for true east-west tracking; returns to east at end of day

### Mounting Provisions

Recessed lip on frame for standard fasteners

Manufactured in the United States by

## SUNTRAC SOLAR PANEL FEATURES

- Internal manifold is for side-by-side or end-to-end mounting.
- Tracker and brushless stepping motor are servicable through motor cover.
- Tracks daily east to west and may be used north to south to track seasonally.
- Tracking can be turned off/on to eliminate stagnation conditions and control high temperature limit.
- Designed for 30 year life
- Low Voltage for Safety
- Panels are self-contained eliminating complicated field installation.

PATENTED