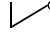



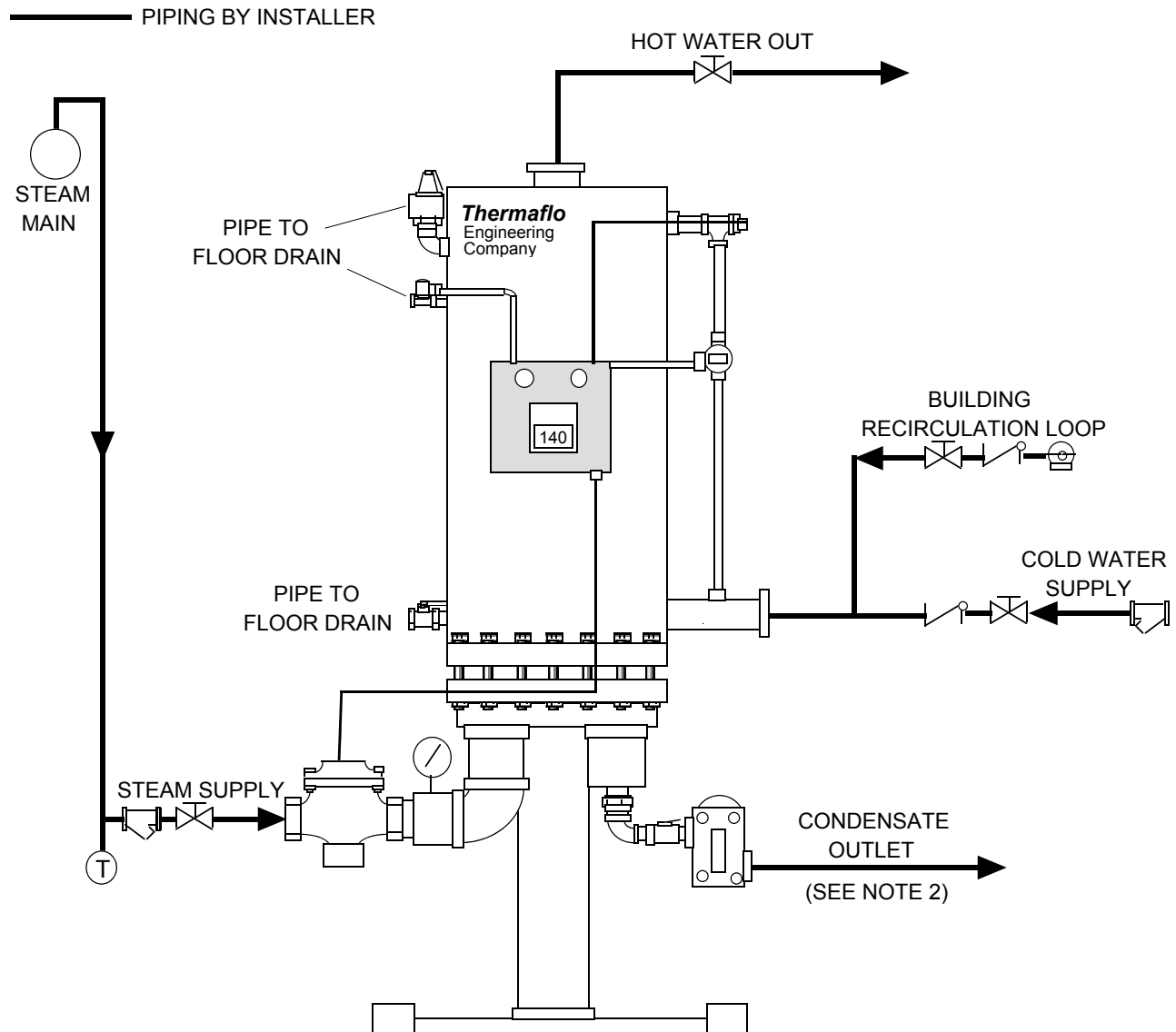

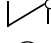



	ISOLATION VALVE
	CHECK VALVE
	CIRCULATION PUMP
	STEAM TRAP
	STRAINER

TH-750V Steam Fired Single Unit Piping Hookup

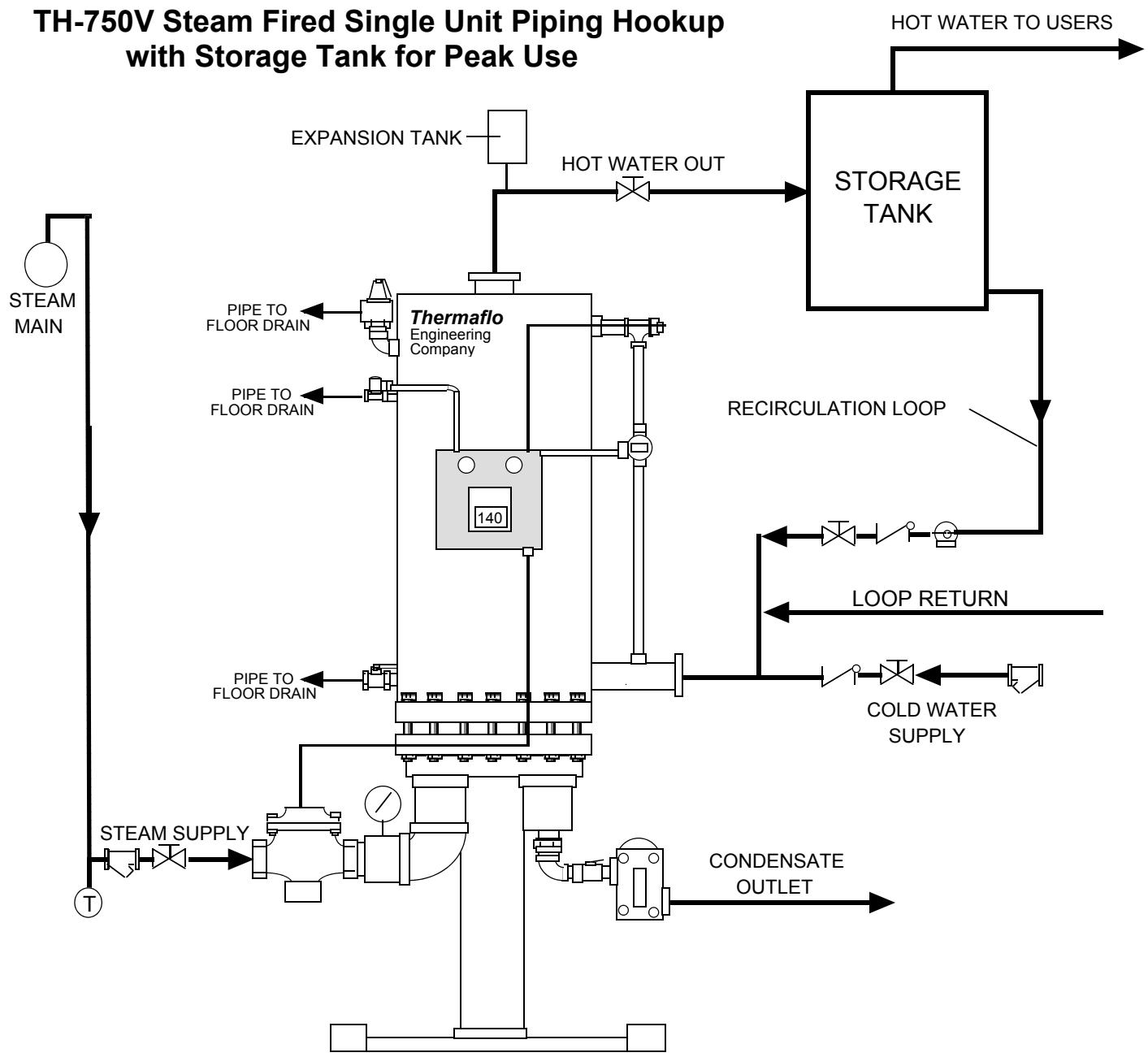


Notes:

1. SUGGESTED PIPING DESIGN. DESIGNER SHOULD CONSULT LOCAL CODES TO VERIFY COMPLIANCE.
2. ALWAYS PIPE OUTLET CONDENSATE TO GRAVITY ATMOSPHERIC RETURN LINES, TO AVOID WATERHAMMER AND INTERNAL STEAM SPACE FLOODING.
3. ALWAYS PIPE SUPPLY STEAM FROM THE TOP OF THE HEADER AS SHOWN, AND INSTALL A MAIN DRIP BEFORE CONTROL VALVE INLET.


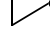



	ISOLATION VALVE
	CHECK VALVE
	CIRCULATION PUMP
	STEAM TRAP
	STRAINER

TH-750V Steam Fired Single Unit Piping Hookup with Storage Tank for Peak Use

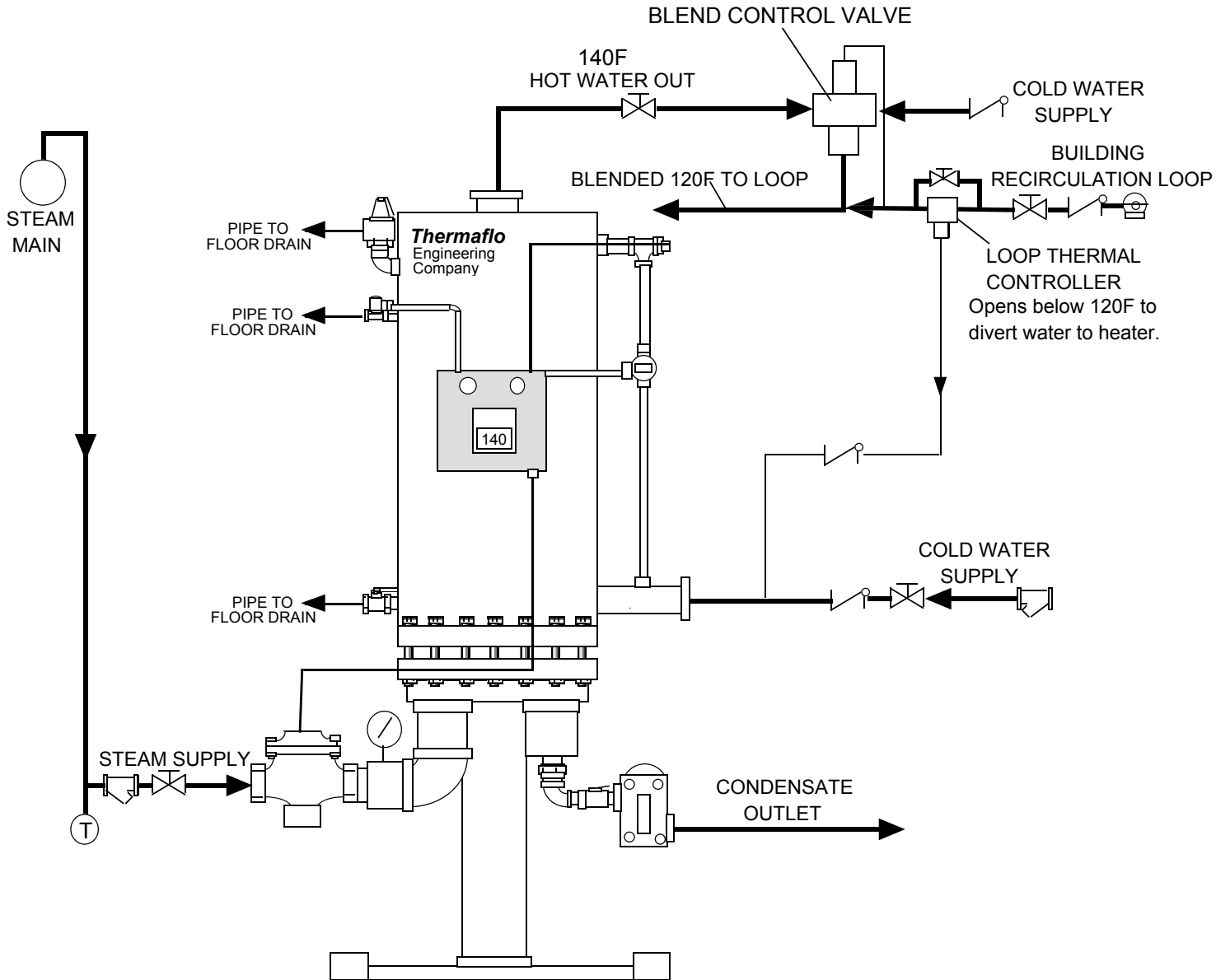


Notes:

1. SUGGESTED PIPING DESIGN. DESIGNER SHOULD CONSULT LOCAL CODES TO VERIFY COMPLIANCE.
2. ALWAYS PIPE OUTLET CONDENSATE TO GRAVITY ATMOSPHERIC RETURN LINES, TO AVOID WATERHAMMER AND INTERNAL STEAM SPACE FLOODING.
3. ALWAYS PIPE SUPPLY STEAM FROM THE TOP OF THE HEADER AS SHOWN, AND INSTALL A MAIN DRIP BEFORE CONTROL VALVE INLET.

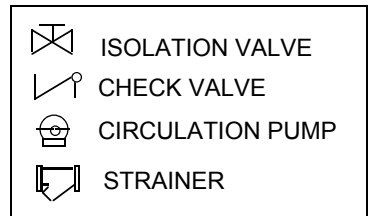
	ISOLATION VALVE
	CHECK VALVE
	CIRCULATION PUMP
	STEAM TRAP
	STRAINER

TH-750V Steam Fired Single Unit Piping Hookup w/ Blend and Thermal Loop Diverter



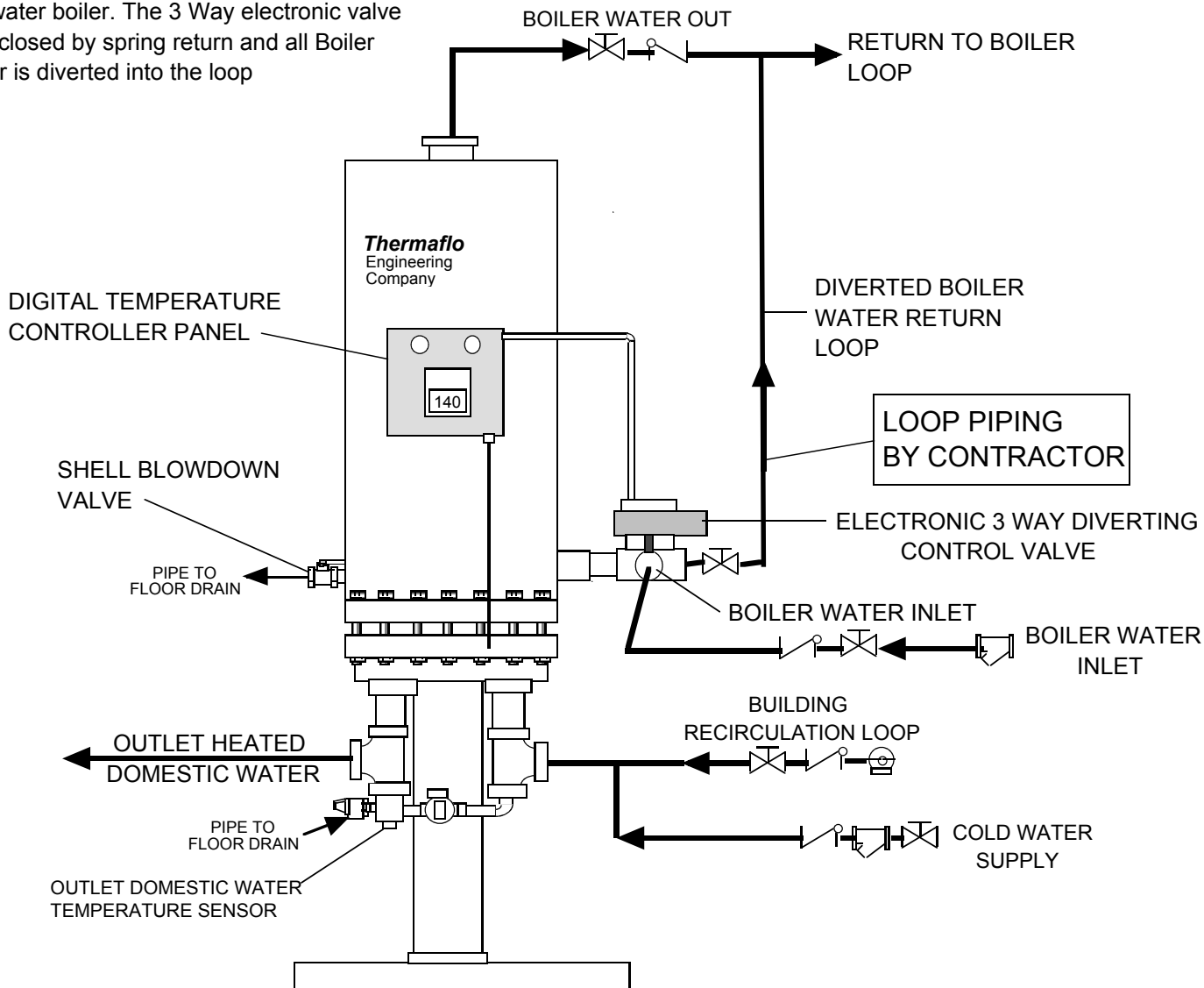
Notes:

1. SUGGESTED PIPING DESIGN. DESIGNER SHOULD CONSULT LOCAL CODES TO VERIFY COMPLIANCE.
2. ALWAYS PIPE OUTLET CONDENSATE TO GRAVITY ATMOSPHERIC RETURN LINES, TO AVOID WATERHAMMER AND INTERNAL STEAM SPACE FLOODING.
3. ALWAYS PIPE SUPPLY STEAM FROM THE TOP OF THE HEADER AS SHOWN, AND INSTALL A MAIN DRIP BEFORE CONTROL VALVE INLET.
4. BLEND CONTROL VALVE AND THERMAL LOOP PIPING AND VALVES BY THERMAFLO ENGINEERING COMPANY.

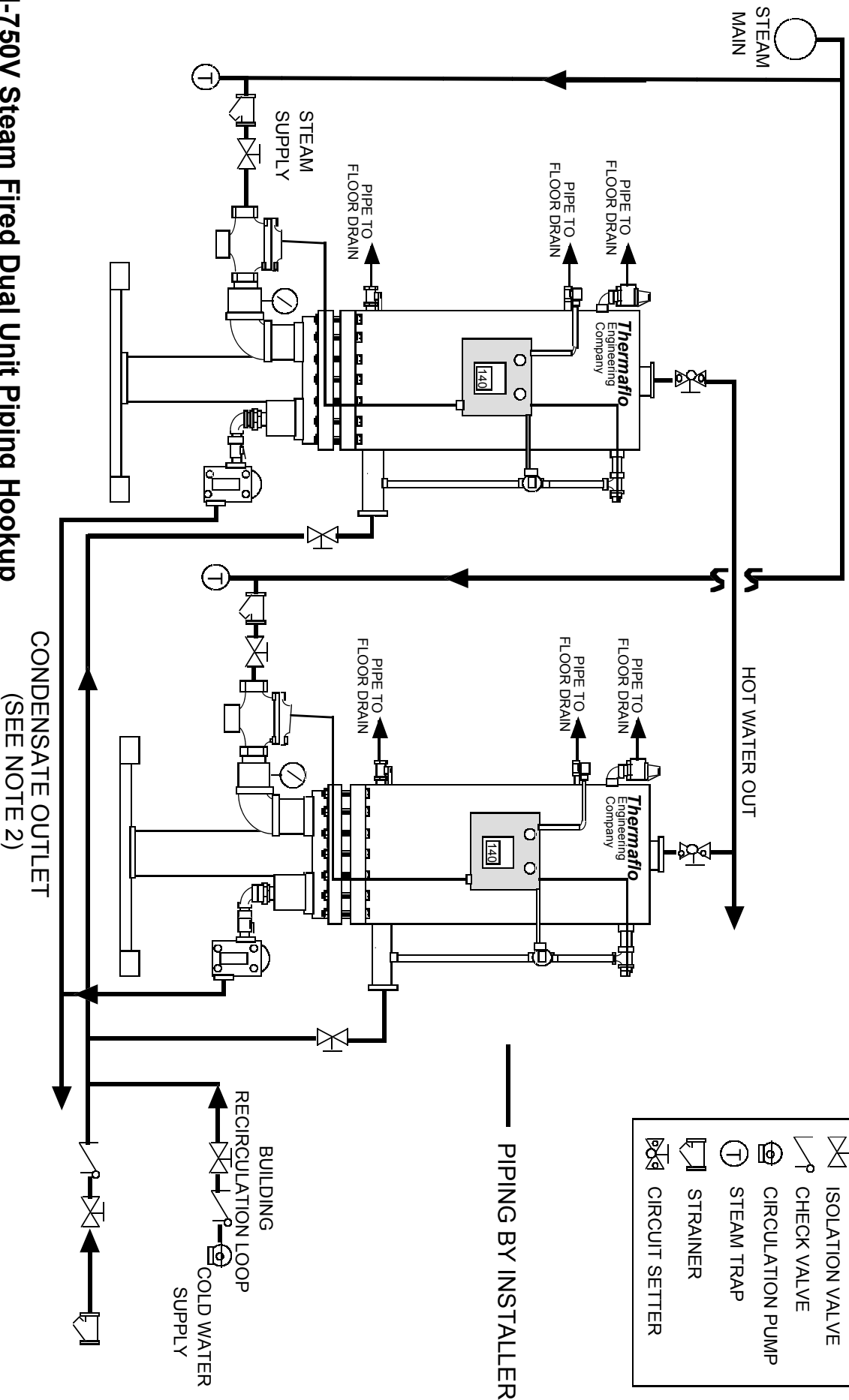


TH-750V WW Water to Water Single Unit Piping Hookup

The 3 Way Electronic Control Valve controls the flow of Boiler water into the shell so that the outlet domestic water flowing from the tubes will be maintained at a precise controlled point. As set point is reached the control valve proportionally diverts Boiler water into the return loop and back to the hot water boiler. The 3 Way electronic valve fails closed by spring return and all Boiler water is diverted into the loop



- NOTES:
1. Contractor or Installer responsible for the exterior hookup piping, isolation valves, strainers, and recirculation systems as shown.
 2. The 3 Way Diverting Control Valve used by Thermaflo is electronic and provides full proportional control of the boiler water into the shell. The valve fails closed on no power, or loss of power. Fail mode diverts all boiler water back to the return loop.
 3. This is a typical hookup shown. All local codes and engineer specifications should be followed.



TH-750V Steam Fired Dual Unit Piping Hookup

Notes:

1. SUGGESTED PIPING DESIGN. DESIGNER SHOULD CONSULT LOCAL CODES TO VERIFY COMPLIANCE.
2. ALWAYS PIPE OUTLET CONDENSATE TO GRAVITY ATMOSPHERIC RETURN LINES, TO AVOID WATERHAMMER AND INTERNAL STEAM SPACE FLOODING.
3. ALWAYS PIPE SUPPLY STEAM FROM THE TOP OF THE HEADER AS SHOWN, AND INSTALL A MAIN DRIP BEFORE CONTROL VALVE INLET.